

ALCAP01 SERIES: HARD GOLD PLATED RINGS, GOLD ALLOY BRUSHES, MULTI-STRANDED #22 AWG ETFE LEAD WIRES

Description

The ALCAP01 Slip Ring is suitable for signal or low power applications. It features gold alloy wire brushes running on compatible hard gold plated rings. It is available with an IP54 or IP67 enclosure. The Capsule can be shaft mounted or, alternatively flange mounted leaving the 12.7mm H10 fit bore free for the passage of other media lines (fluid, gas or fiber optics).

Non-Standard Modifications

- » Optional rotor or stator flanges
- » Mount/drive arrangement to suit customer's requirements
- » Higher current & voltage capacity (internally modified)
- » Can be supplied with Integrated Rotary Union, RF or Fiber Optics
- » Lead type & lengths to suit customer's requirements
- » Alternative materials for harsh environments

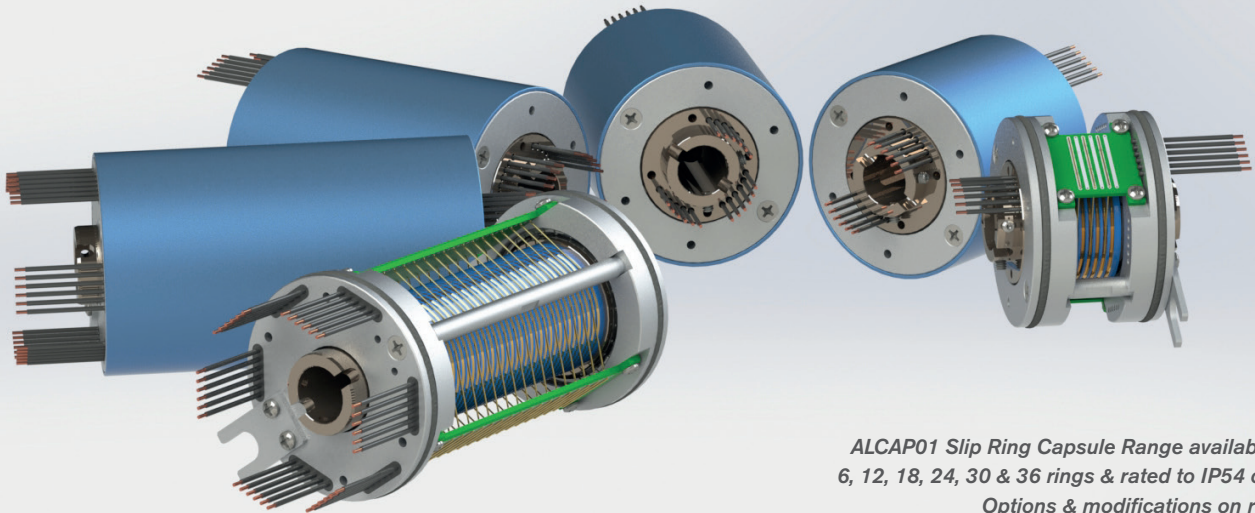
Electrical

- » No. of Rings: 6, 12, 18, 24, 30 or 36 as standard
- » Current: 5 Amps per ring standard
- » Voltage: up to 250 Volts standard
- » Insulation Resistance: >200MΩ at 500 VDC
- » Hipot: 500 VAC for 15 seconds (all combinations)
- » Electrical Noise: Less than 10 mΩ peak at 25 rpm

Mechanical

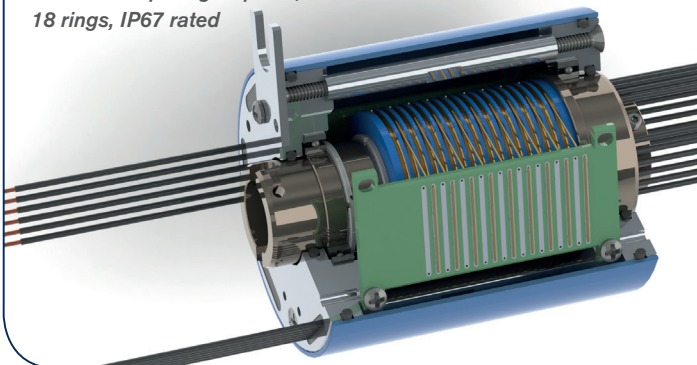
- » Contacts: Gold alloy brushes on hard gold plated rings
- » Housing: Anodised Aluminium & Shaft: Aluminium with E-Nickel
- » Leads: #22 awg, ETFE insulated, 300mm long standard
- » Operating Speed: 700 rpm maximum – intermittent
- » Life: 10×10^6 revolutions minimum
- » Temperature Range: -35°C to +135°C

**Please note that operating life of Capsule is dependant on rotational speed, environment & temperature*

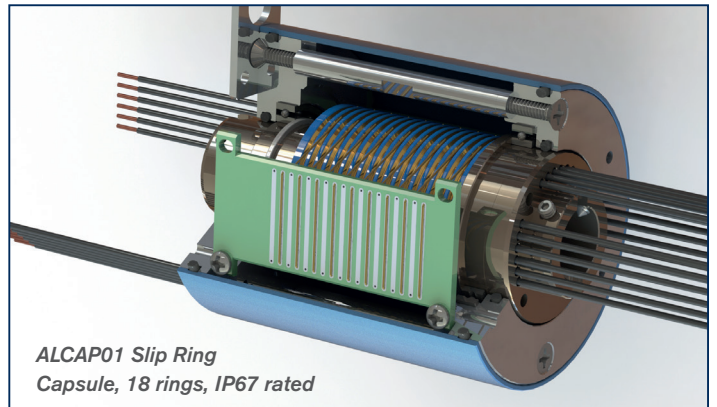


ALCAP01 Slip Ring Capsule Range available with 6, 12, 18, 24, 30 & 36 rings & rated to IP54 or IP67
Options & modifications on request

ALCAP01 Slip Ring Capsule,
18 rings, IP67 rated



ALCAP01 Slip Ring
Capsule, 18 rings, IP67 rated



IP54 PART #	IP67 SEALED PART #	NUMBER OF RINGS	LENGTH A	LENGTH B
10100-011006-000	11100-011006-000	6	39.5mm +/- 0.5mm	34.2mm +/- 0.5mm
10100-011012-000	11100-011012-000	12	53.5mm +/- 0.5mm	48.2mm +/- 0.5mm
10100-011018-000	11100-011018-000	18	67.0mm +/- 0.5mm	61.7mm +/- 0.5mm
10100-011024-000	11100-011024-000	24	80.5mm +/- 0.5mm	75.2mm +/- 0.5mm
10100-011030-000	11100-011030-000	30	94.5mm +/- 0.5mm	89.2mm +/- 0.5mm
10100-011036-000	11100-011036-000	36	94.5mm +/- 0.5mm	89.2mm +/- 0.5mm